

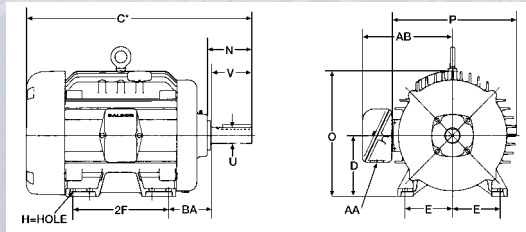
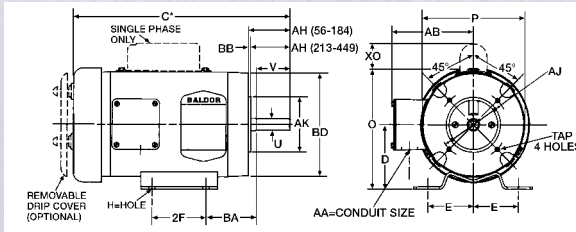


# BALDOR MOTORS AND DRIVES

Leader in Energy Efficient  
Industrial Electric Motors and Drives

Drawings represent standard TEFC general purpose motors  
Refer Data Section 502 for various models, OPEN or TEFC  
\*Dimensions are for reference only.

NEMA SHAFT (U)	KEYSEAT DIMENSIONS		NEMA SHAFT (U)	KEYSEAT DIMENSIONS	
	(R)	(S)		(U)	(R)
3/8	21/64	FLAT	1-7/8	1-19/32	1/2
1/2	29/64	FLAT	2-1/8	1-27/32	1/2
5/8	33/64	3/16	2-3/8	2-1/64	5/8
7/8	49/64	3/16	2-1/2	2-3/16	5/8
1-1/8	63/64	1/4	2-7/8	2-29/64	3/4
1-3/8	1-13/64	5/16	3-3/8	2-7/8	7/8
1-5/8	1-13/32	3/8	3-7/8	3-5/16	1



\* CONTACT YOUR LOCAL BALDOR  
OFFICE FOR "C" DIMENSIONS

## NEMA - QUICK REFERENCE CHART

DIMENSIONS - N, O, P, AB AND XO  
ARE SPECIFIC TO BALDOR

NEMA FRAME	D	E	2F	H	N	O	P	U	V	AA	AB	AH	AJ	AK	BA	BB	BD	XO	TAP
42	2-5/8	1-3/4	1-11/16	9/32 SLOT	1-1/2	5	4-11/16	3/8	1-1/8	3/8	4-1/32	1-5/16	3-3/4	3	2-1/16	1/8	4-5/8	1-9/16	1/4-20
48	3	2-1/8	2-3/4	11/32 SLOT	1-7/8	5-7/8	5-11/16	1/2	1-1/2	1/2	4-3/8	1-11/16	3-3/4	3	2-1/2	1/8	5-5/8	2-1/4	1/4-20
56	3-1/2	2-7/16	3	11/32 SLOT	2-7/16	6-7/8	6-5/8	5/8	1-7/8	1/2	5	2-1/16	5-7/8	4-1/2	2-3/4	1/8	6-1/2	2-1/4	3/8-16
56H			5		2-1/8														
143T	3-1/2	2-3/4	4	11/32	2-1/2	6-7/8	6-5/8	7/8	2-1/4	3/4	5-1/4	2-1/8	5-7/8	4-1/2	2-1/4	1/8	6-1/2	2-1/4	3/8-16
145T			5		2-1/2														
182	4-1/2	3-3/4	4-1/2	13/32	2-11/16	8-11/16	7-7/8	7/8	2-1/4		5-7/8	2-1/8	5-7/8	4-1/2	2-3/4	1/8	6-1/2	2-3/8	3/8-16
184			5-1/2		2-11/16			7/8	2-1/4	3/4		2-1/8	5-7/8	4-1/2		1/8	6-1/2		3/8-16
182T			4-1/2		3-9/16			1-1/8	2-3/4			2-5/8	7-1/4	8-1/2		1/4	9		1/2-13
184T			5-1/2		3-9/16			1-1/8	2-3/4			2-5/8	7-1/4	8-1/2		1/4	9		1/2-13
213	5-1/4	4-1/4	5-1/2	13/32	3-1/2	10-1/4	9-9/16	1-1/8	3	3/4	7-3/8	2-3/4	7-1/4	8-1/2	3-1/2	1/4	9	2-3/4	1/2-13
215			7		3-1/2			1-1/8	3			2-3/4							
213T			5-1/2		3-7/8			1-3/8	3-3/8			3-1/8							
215T			7		3-7/8			1-3/8	3-3/8			3-1/8							
254U	6-1/4	5	8-1/4	17/32	4-1/16	12-7/8	12-15/16	1-3/8	3-3/4	1	9-5/8	3-1/2	7-1/4	8-1/2	4-1/4	1/4	10	---	1/2-13
256U			10		4-1/16			1-5/8	4			3-3/4							
254T			8-1/4		4-5/16			1-5/8	4			3-3/4							
256T			10		4-5/16			1-5/8	4			3-3/4							
284U	7	5-1/2	9-1/2	17/32	5-1/8	14-5/8	14-5/8	1-5/8	4-7/8	1-1/2	13-1/8	4-5/8	9	10-1/2	4-3/4	1/4	11-1/4	---	1/2-13
286U			11		5-1/8			1-5/8	4-7/8			4-5/8							
284T			9-1/2		4-7/8			1-7/8	4-5/8			4-3/8							
286T			11		4-7/8			1-7/8	4-5/8			4-3/8							
284TS			9-1/2		3-3/8			1-5/8	3-1/4			3							
286TS			11		3-3/8			1-5/8	3-1/4			3							
324U	8	6-1/4	10-1/2	21/32	5-7/8	16-1/2	16-1/2	1-7/8	5-5/8		14-1/8	5-3/8	11	12-1/2	5-1/4	1/4	13-3/8	---	5/8-11
326U			12		5-7/8			1-7/8	5-5/8			5-3/8							
324T			10-1/2		5-1/2			2-1/8	5-1/4	2		5							
326T			12		5-1/2			2-1/8	5-1/4			5							
324TS			10-1/2		3-15/16			1-7/8	3-3/4			3-1/2							
326TS			12		3-15/16			1-7/8	3-3/4			3-1/2							
364U	9	7	11-1/4	21/32	6-3/4	18-1/2	18-1/4	2-1/8	6-3/8	2-1/2	15-1/16	6-1/8	11	12-1/2	5-7/8	1/4	13-3/8	---	5/8-11
365U			12-1/4		6-3/4			2-1/8	6-3/8			6-1/8							
364T			11-1/4		6-1/4			2-3/8	5-7/8			5-5/8							
365T			12-1/4		6-1/4			2-3/8	5-7/8			5-5/8							
364TS			11-1/4		4			1-7/8	3-3/4			3-1/2							
365TS			12-1/4		4			1-7/8	3-3/4			3-1/2							
404U	10	8	12-1/4	13/16	7-3/16	20-5/16	20-1/8	2-3/8	7-1/8	3	18	6-7/8	11	12-1/2	6-5/8	1/4	13-7/8	---	5/8-11
405U			13-3/4		7-3/16			2-3/8	7-1/8			6-7/8							
404T			12-1/4		7-5/16			2-7/8	7-1/4			7							
405T			13-3/4		7-5/16			2-7/8	7-1/4			7							
404TS			12-1/4		4-1/2			2-1/8	4-1/4			4							
405TS			13-3/4		4-1/2			2-1/8	4-1/4			4							
444U	11	9	14-1/2	13/16	8-5/8	22-7/8	22-3/8	2-7/8	8-5/8		19-9/16	8-3/8	14	16	7-1/2	1/4	16-3/4	---	5/8-11
445U			16-1/2		8-5/8			2-7/8	8-5/8			8-3/8							
444T			14-1/2		8-1/2			22-7/8	22-3/8			8-1/4							
445T			16-1/2		8-1/2			22-7/8	22-3/8			8-1/4							
447T			20		8-15/16	22-15/16	23-3/4	3-3/8	8-1/2	3	21-11/16	8-1/4							
449T			25		8-15/16	22-15/16	23-3/4	3-3/8	8-1/2		21-11/16	8-1/4							
444TS			14-1/2		5-3/16	22-7/8	22-3/8	2-3/8	4-3/4		19-9/16	4-1/2							
445TS			16-1/2		5-3/16	22-7/8	22-3/8	2-3/8	4-3/4		19-9/16	4-1/2							
447TS			20		4-15/16	22-15/16	23-3/4	2-3/8	4-3/4	4NPT	21-11/16	4-1/2							
449TS			25		4-15/16	22-15/16	23-3/4	2-3/8	4-3/4	4NPT	21-11/16	4-1/2							

5000 FRAME	D	E	2F	H	O	P	U	V	AA	AB	BA
5007S	12-1/2	10	22	15/16	26-27/32	30	2-1/2	6-1/2	4-NPT	26-7/8	8-1/2
5007L	12-1/2	10	22	15/16	26-27/32	30	3-7/8	11-1/8	4-NPT	26-7/8	8-1/2
5009S	12-1/2	10	28	15/16	26-27/32	30	2-1/2	6-1/2	4-NPT	26-7/8	8-1/2
5009L	12-1/2	10	28	15/16	26-27/32	30	3-7/8	11-1/8	4-NPT	26-7/8	8-1/2
5011S	12-1/2	10	36	15/16	26-27/32	30	2-1/2	6-1/2	4-NPT	26-7/8	8-1/2
5011L	12-1/2	10	36	15/16	26-27/32	30	3-7/8	11-1/8	4-NPT	26-7/8	8-1/2

NEMA C-FACE	BA DIMENSIONS
143-5TC	2-3/4
182-4TC	3-1/2
213-5TC	4-1/4
254-6TC	4-3/4

NEMA FRAMES PRIOR TO 1953										
FRAME	D	E	2F	H	O	P	U	V	AA	BA
66	4-1/8	2-15/16	2-1/2	2-1/4	3/4	2-3/4	3-1/8	2-1/4	3-1/8	
203	5	4	2-3/4	2-7/16	3/4	2	3-1/8			
204										
224	5-1/2	4-1/2	3-3/8	3-1/4	1	3	3-1/2			
225										
254	6-1/4	5	4-1/8	3-7/16	1-1/8	3-3/8	4-1/4			
284	7	5-1/2	4-3/4	4-1/4	1-1/4	3-3/4	4-3/4			
324	8	6-1/4	5-1/4	5-3/8	1-5/8	4-7/8	5-1/4			
326			6							
364	9	7	5-5/8	5-5/8	1-7/8	6-3/8	5-7/8			
365			6-1/8							
404	10	8	6-1/8	6-3/8	2-1/8	6-1/8	6-5/8			
405			6-7/8							
444	11	9	7-1/4	7-1/8	2-3/8	6-7/8	7-1/2			
445			8-1/4							
504	12-1/2	10	8	8-5/8	2-7/8	8-3/8	8-1/2			
505			9							

BALDOR ELECTRIC COMPANY  
P.O. BOX 2400  
FORT SMITH, ARKANSAS  
72902-2400 U.S.A.